

Evaluation Summary

HEIDELBERG HEALTH ECONOMICS SUMMER SCHOOL 2024

INTRODUCTORY MODULE, SEPTEMBER 20 - 21, 2024

CORE MODULE, SEPTEMBER 23 - 27, 2024

Ramon Schaefer and Michael Schlander
in cooperation with Anett Molnar

Wiesbaden and Heidelberg, December 2024

INNOVAL^{HC}



About the Authors

Ramon Schaefer^{a-c} and Michael Schlander^{a-d}

in cooperation with
Anett Molnar^{b,c}

^aInstitute for Innovation & Valuation in Health Care,
Aschaffenburg and Wiesbaden, Germany;

^bDivision of Health Economics at German Cancer Research Center
(Deutsches Krebsforschungszentrum, DKFZ), Heidelberg, Germany;

^cUniversity of Heidelberg, Mannheim Medical Faculty,
Mannheim, Germany;

^dUniversity of Heidelberg, Alfred Weber Institute,
Heidelberg, Germany;

Correspondence:

Ramon Schaefer, Ph.D., M.A., B.Sc.

Professor Michael Schlander, M.D., Ph.D., M.B.A.

Institute for Innovation & Valuation in Health Care (InnoVal^{HC})

An der Ringkirche 4, D-65197 Wiesbaden / Germany

Phone: +49 (0) 611 4080 789 12; Facsimile: +49 (0) 611 4080 789 99

E-Mail: ramon.schaefer@innoval-hc.com

michael.schlander@innoval-hc.com



Table of Contents

Introduction	4
Venue	5
Program	6
Events	8
Faculty	10
Evaluation of Formal Feedback	12
Introductory Module	15
Core Module	18
Introductory & Core Module	21
Outlook: Summer School 2025	24



Introduction

The **Heidelberg Health Economics Summer Schools** have been designed to offer a high-level forum for health care decision makers, health economists, clinician scientists, and advanced PhD students (from academia, independent research institutes, and from the research-based biopharmaceutical industry), to discuss the appropriate role, current use, and limitations of economic evaluations to inform Health Technology Assessments (HTAs), with a view towards future improvement.



The **Summer School 2024** program commenced with an overview of the contribution of health economics to current debates surrounding the financing of health care. Next, the theory and practice of HTAs including economic evaluation were reviewed in-depth.

This was followed by a closer look at currently discussed options how to better integrate the perspectives (and / or pre-



ferences) of citizens and patients, as a complement or an alternative to the conventional health economic perspectives of society and / or payers.

Venue

For the first time, the **Heidelberg Health Economics Summer School** took place at the NOBIS event center (at the NOI TechPark) in Bruneck–Brunico / South Tyrol–Alto Adige, Italy.



NOBIS event center / NOI TechPark in Bruneck–Brunico.



Program

Introductory Module (Sept. 20–21, 2024)

- (1) Friday Introduction to Health Economics
incl. Cost-Effectiveness Analysis
- (2) Saturday Value & Valuation
and Costing in Health Economics

Core Module (Sept. 23–27, 2024)

- (1) Monday Fundamentals of Health Economics //
Value & Valuation
- (2) Tuesday HTA & Economic Evaluation in Practice //
A Closer Look at the Conventional Logic
of Health Economics
- (3) Wednesday Some Implications of the
Conventional Logic of Health Economics
- (4) Thursday New Perspectives for HTA
and Economic Evaluation
- (5) Friday HTA and Economic Evaluation:
Integrating the Patient Perspective



Introductory Module		Core Module				
Friday Sept. 20	Saturday Sept. 21	Monday Sept. 23	Tuesday Sept. 24	Wednesday Sept. 25	Thursday Sept. 26	Friday Sept. 27
	Cost Effectiveness Analysis (II) Decision Analysis	Health Care Systems & Financing Setting Limits Current Debates	Wide-Spread Diseases HTA & Cost Effectiveness Analysis (I)	Assumptions Revisited In Search of Utility & Efficiency	Equity & Efficiency Alternatives to the Conventional Paradigm	Perspectives of Patients Multi-Criteria Decision Analysis (MCDA)
		[Option for Late Arrival]				
Cost Effectiveness Analysis (I) Valuation Costing Exercises	Application & Exercises	Welfare Economics & The Logic of Cost Effectiveness Diagnostics & Combination Treatments: Issues in Value Attribution	HTA & Cost Effectiveness Analysis (II) Precision Cancer Medicine & New Clinical Trial Designs	Normative & Empirical Issues Industrial Economics CEA, HTA, and Fast Access to Innovation	Focus on Due Process? The Citizens' Perspective Social Cost Value Analysis (SCVA)	Outlook

© InnoVal^{HC} 2024

Heidelberg Health Economics Summer School 2024

International Faculty
↪ Prof. Amanda Adler (London & Oxford)
↪ Dr. Richard Baird (Cambridge)
↪ Dr. Meindert Boysen (London)
↪ Dr. Cinzia Brunelli (Milan)
↪ Thomas B. Cueni (Basel)
↪ Christoph Glaetzer (N Brunswick, NJ)
↪ Dr. Kevin Haninger (Washington DC)
↪ Dr. Ansgar Hebborn (Basel)
↪ Prof. Soren Holm (Manchester & Oslo)
↪ Dr. Mohit Jain (San Rafael, CA)
↪ Dr. Gergő Merész (Budapest)
↪ Prof. Dan Ollendorf (Boston, MA)
↪ Prof. Maarten Postma (Groningen)
↪ Prof. Gérard de Pouvourville (Paris)
↪ Prof. Jeff Richardson (Melbourne, Vic)
↪ Prof. Michael Schlander (Heidelberg)
↪ Dr. Cees Smit (Amsterdam)
↪ Dr. Oriol Solà-Morales (Barcelona)

Scientific Program
Health Care Financing The Economics of Health & Health Care / Access to Innovation & Industrial Economics
Health Technology Assessments & Cost / Value Evaluation
↪ <i>Monday:</i> The Perspective of Society
↪ <i>Tuesday:</i> The Perspective of Payers
↪ <i>Wednesday:</i> The Perspective of Citizens
↪ <i>Thursday:</i> The Perspective of Patients
↪ <i>Friday:</i> A Due Process Perspective
Challenges & Special Issues Rare Disorders / Orphan Medicinal Products / ATMPs / Medical Device Regulation / Diagnostics / Implications



Events

The scientific program was enhanced by a special event on Wednesday night (September 25, 2024) – participants were invited to a “fireside chat” with Thomas B. Cueni, until recently the Director General of the International Federation of Pharmaceutical Manufacturers and Associations (IFPMA), long-time Secretary General of Interpharma, and Secretary of the Biopharmaceutical CEO Round Table (BCR).

In addition to an intense scientific program, dedicated to “*New Perspectives for Health Economics & Health Technology Assessments (HTAs)*”, participants attended the Summer School Welcome Reception (September 24, 2024) at the Bruneck (/Brunico) Castle with its RIPA Messner Mountain Museum – including a guided museum tour.

The program on Thursday (September 26, 2024) took place at the LUMEN museum on the summit plateau of the Kronplatz (2,275m above sea level), surrounded by views of the Dolomites. Unfortunately, weather conditions during our stay did not permit to take full advantage of the spectacular location. A guided tour to the LUMEN Museum of Mountain Photography was offered during an extended lunch break, which was delivered by the co-founder and curator of the museum, Dr. Richard Piock. Also coffee breaks and lunch took place at the AlpiNN food space & restaurant – home of *Cook the Mountain* – on top of the Kronplatz (/ Plan de Corones).



LUMEN museum & event space and AlpiNN food space & restaurant on the top of mount Kronplatz.



Group photo of faculty and attendants – taken during the day on mount Kronplatz (/Plan de Corones).



Faculty

- Professor **Amanda Adler**
(University of Oxford / England)
- Dr. **Richard Baird**
(University of Cambridge / England)
- Dr. **Meindert Boysen**
(NICE, London / England)
- Dr. **Cinzia Brunelli**
(National Cancer Institute of Milan / Italy)
- **Thomas Cueni**
(Basel / Switzerland)
- **Christoph Glaetzer**
(Johnson & Johnson, New Brunswick, NJ / USA)
- Dr. **Kevin Haninger**
(PhRMA, Washington, DC / USA)
- Professor **Gérard de Pouvourville**
(ESSEC Business School, Paris / France)
- Dr. **Ansgar Hebborn**
(Roche, Basel / Switzerland)
- Professor **Søren Holm**
(University of Manchester / England;
University of Oslo / Norway)
- Dr. **Mohit Jain**
(BioMarin, San Rafael, CA / USA)
- Dr. **Gergő Merész**
(National Institute of Pharmacy and Nutrition,
Budapest / Hungary)
- **Anett Molnar**
(German Cancer Research Center (DKFZ) & Heidelberg
University, Heidelberg and Mannheim / Germany)



- ↪ Professor **Daniel Ollendorf**
(ICER & Tufts University School of Medicine, Boston,
MA / USA)
- ↪ Professor **Maarten Postma**
(University of Groningen / The Netherlands)
- ↪ Professor **Jeffrey Richardson**
(Monash University, Melbourne, Vic / Australia)
- ↪ Professor **Michael Schlander***
(German Cancer Research Center (DKFZ) & Heidelberg
University, Heidelberg and Mannheim / Germany;
InnoVal^{HC}, Aschaffenburg and Wiesbaden / Germany)
- ↪ Dr. **Ramon Schaefer**
(German Cancer Research Center (DKFZ) & Heidelberg
University, Heidelberg and Mannheim / Germany;
InnoVal^{HC}, Aschaffenburg and Wiesbaden / Germany)
- ↪ Dr. **Oriol Solà-Morales**
(IISPV & HITT, Barcelona / Spain)
- ↪ Dr. **Cees Smit**
(Patient Advocate, Amsterdam / The Netherlands)

* Scientific Program Chair



Evaluation based on Online Feedback

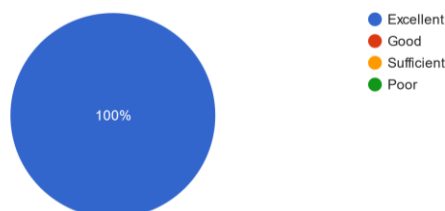
An online survey was circulated among all participants during October 2024.

More than two-thirds of the survey questionnaires were returned by the beginning of November 2024. 60% of the respondents were from the private sector (including consultancy, industry, and health insurance institutions, including public / statutory ones) and 40% from the academic sector (other public and non-governmental institutions).

The *first section of the survey* instructed participants to rate the quality of particular elements of the Summer School.

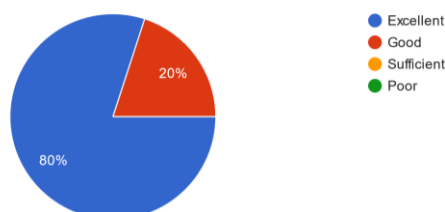
1.a Quality of Organization

[Response options from "poor" to "excellent"]



1.b Quality of Program

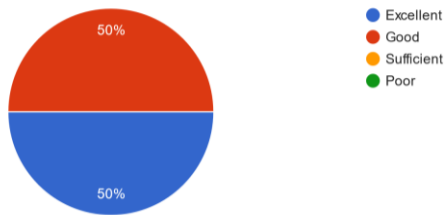
[Response options from "poor" to "excellent"]





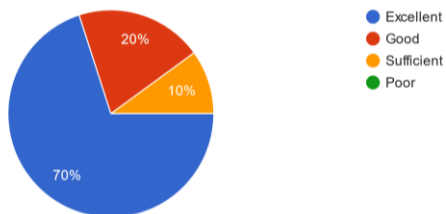
1.c Rating of Time Schedule

[Response options from "poor" to "excellent"]



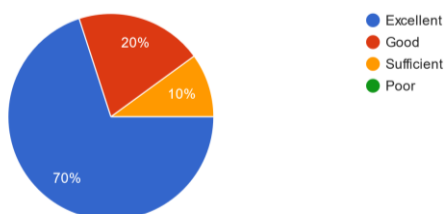
1.d Quality of Documentation

[Response options from "poor" to "excellent"]



1.e Rating of Location

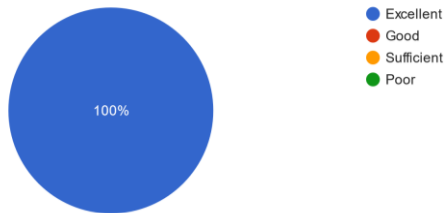
[Response options from "poor" to "excellent"]





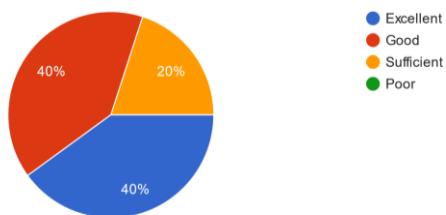
1.f Rating of Venue

[Response options from "poor" to "excellent"]



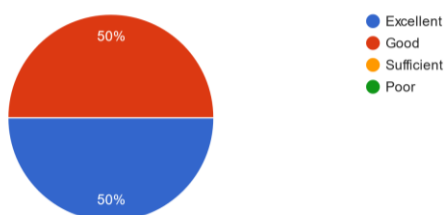
1.g Rating of Catering

[Response options from "poor" to "excellent"]



1.h Rating of Value for Money

[Response options from "poor" to "excellent"]





In addition to closed questions, participants were invited to communicate their perceptions, which resulted in comments including the following:

- *“Make more time for debate and questions.”*
- *“Good balance between theory & practice.”*
- *“Great event! I’ll be happy to send my team to the next edition.”*
- *“It was a very good program with very good content and excellent lecturers.”*
- *“I enjoyed the summer school. Planning to get there from the UK within a day required some time, but I found the Bruneck [site] ideal for such an event as everything I needed was within walking distance, and the venue was very nice. As I mentioned, the recommended hotels were fully booked a few weeks before the event, so offering more options or advising early booking might be a good idea. The overall cost for me was very high. The amount of money is prohibitive for the vast majority of British academics, let alone students, to attend. So, offering more discounts, at least for students, if possible, would be great.”*
- *“The first part of the course had a more balanced interactive part.”*

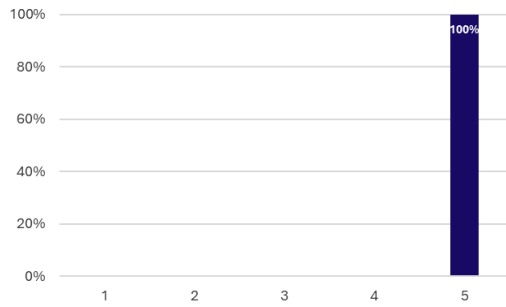
Introductory Module

In the *second section of the survey*, participants were asked to rate the Introductory Module (September 20–21, 2024) with regard to content, relevance, and presentations using a 5-point Likert-type scale, where response options ranged from “poor” (1) to “excellent” (5).



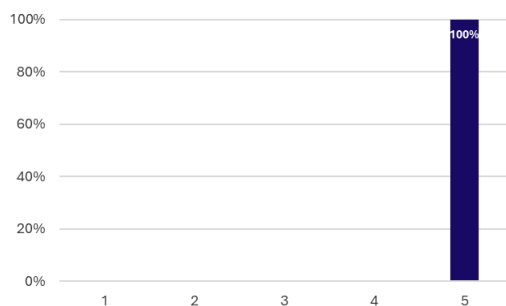
2.a Intro Module – Rating of Content

[Response options from 1, “poor”, to 5, “excellent”]



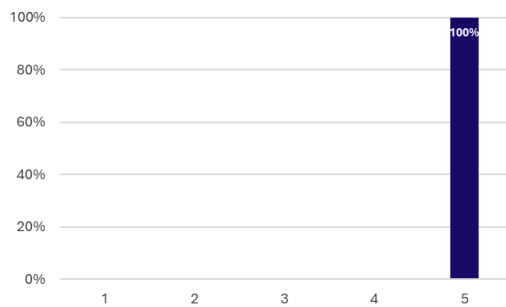
2.b Intro Module – Rating of Relevance

[Response options from 1, “poor”, to 5, “excellent”]



2.c Intro Module – Rating of Faculty

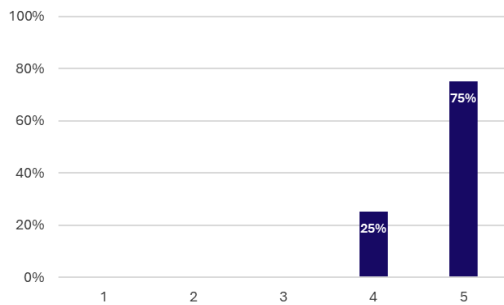
[Response options from 1, “poor”, to 5, “excellent”]





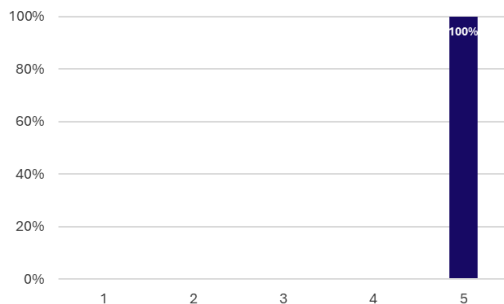
2.d Intro Module – Rating of Presentations

[Response options from 1, “poor”, to 5, “excellent”]



2.e Intro Module – Rating of Exercises & Case Studies

[Response options from 1, “poor”, to 5, “excellent”]



[Evaluation results compiled by Ramon Schaefer]

Comments & Suggestions:

- “Same as for the Core Module – very informative & balanced sessions.”
- “Just right!”

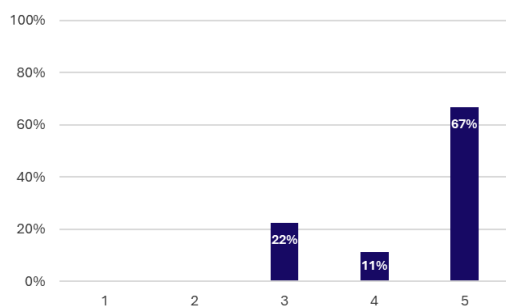


Core Module

In the *third section of the survey*, participants were asked to rate the Core Module (September 23–27, 2024) with regard to content, relevance, and presentations using a 5-point Likert-type scale, where response options ranged from “poor” (1) to “excellent” (5), similar to those used before for the evaluation of the Introductory Module.

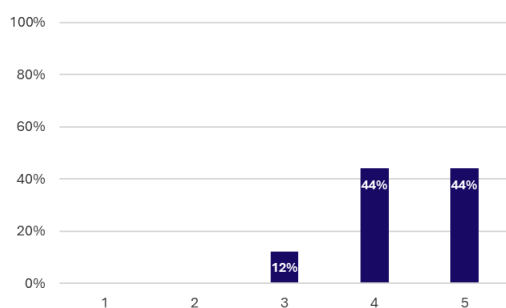
3.a Core Module – Rating of Content

[Response options from 1, “poor”, to 5, “excellent”]



3.b Core Module – Rating of Relevance

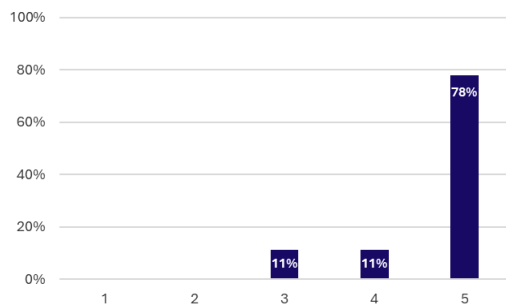
[Response options from 1, “poor”, to 5, “excellent”]





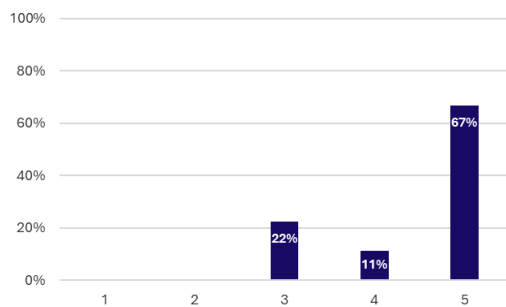
3.c Core Module – Rating of Faculty

[Response options from 1, “poor”, to 5, “excellent”]



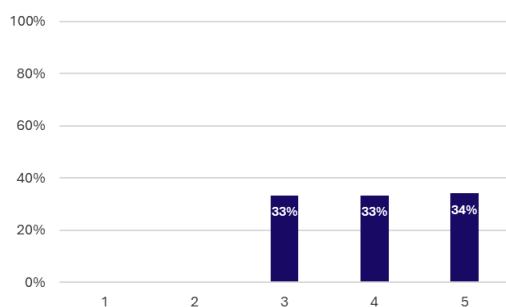
3.d Core Module – Rating of Presentations

[Response options from 1, “poor”, to 5, “excellent”]



3.e Core Module – Rating of Exercises & Case Studies

[Response options from 1, “poor”, to 5, “excellent”]



[Evaluation results compiled by Ramon Schaefer]

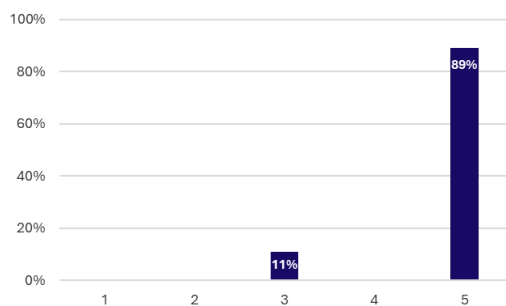


Comments & Suggestions:

- *“Not enough exercises”*
- *“Would have preferred slightly less time on economic theory related topics and more focus on HTA, use of health economics in HTA evaluations, different methods to meet the needs of HTAs, etc.”*
- *“Partially involved, cases were ok, not enough time for discussion”*
- *“Great faculty!”*
- *Very informative sessions. I certainly learned a lot. Perhaps some days were very long, i.e., I would [have] love[d] to participate at the fire side chat, but I was simply too tired to do so.”*

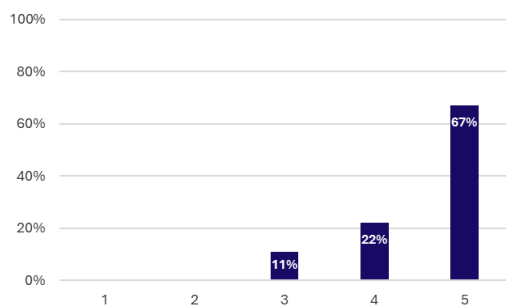
3.f Core Module – Rating of Welcome Reception (Sept. 24)

[Response options from 1, “poor”, to 5, “excellent”]



3.g Core Module – Rating of Fireside Chat (Sept. 25)

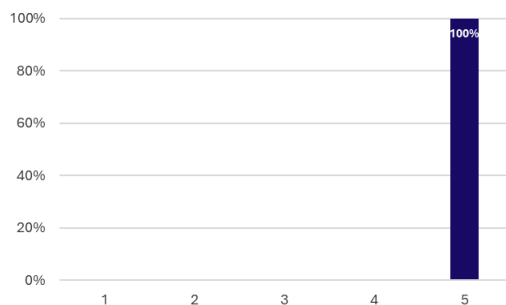
[Response options from 1, “poor”, to 5, “excellent”]





3.g Core Module – Rating of Program Day on New Perspectives on Mount Kronplatz (Sept. 26)

[Response options from 1, “poor”, to 5, “excellent”]



[Evaluation results compiled by Ramon Schaefer]

Comments & Suggestions:

- “Offered excellent opportunity for discussion with experts.”
- “I would put a 10 to the LUMEN and the Castle if I could!”

Introductory & Core Module

In the *final section of the online survey*, participants were requested to report, in an open-ended format, their perception of the strengths of the program, the complexity of the course (i.e., whether the course was easy to follow), and to offer ideas and suggestions for further improvement with a view towards future *Summer Schools*.



Perceived **strengths** of the program:

- *The experts that stayed available during the meeting.*
- *Good balance of theory and practice. Room for questions!*
- *I liked how different representatives across HTAs were included. I enjoyed the debate and questions they asked each other.*
- *Discussions expert to expert, and expert to participants*
- *Faculty, length of the program, side events.*
- *Involvement of different lecturers from different countries, which helped to convey a broader perspective*
- *Covered many important topics. The faculty. The discussions and networking!*
- *Different perspectives!*
- *Diversity of the viewpoints and the faculty*

Level of **complexity** of the program:

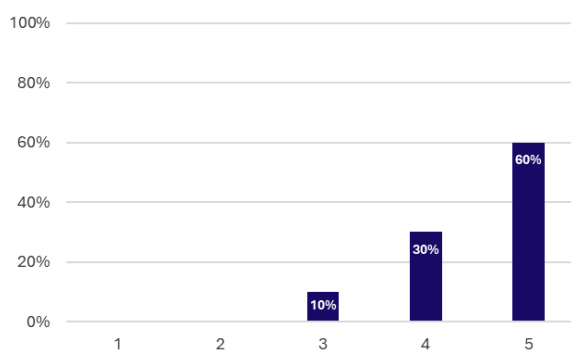
- *Ok*
- *Appropriate*
- *Not too complex*
- *Okay, but a little too much focus on quality of life & social [value] assessment*
- *A good mix of theory and practice*
- *The level of complexity of the programme felt just right - challenging enough to engage me, but not so difficult that I felt overwhelmed.*
- *About right!*
- *I could understand most of the theory, despite not having too much experience.*
- *Overwhelming at points!*



Suggestions for changes and/or improvements of the program:

- *Messages could have been brought better by several of the speakers*
- *More direct applicability and less theory*
- *Invitation of 1 - 2 CEOs from big companies*
- *More time for discussions*
- *Already when preparing the programme, think more about how to stay on schedule*
- *Offer some additional discounts for academics and in particular students, if possible; to make it more accessible, but without compromising quality*
- *More interactive core module!*
- *Perhaps some additional clues to help link things together.*

Finally, **how likely is it that you would recommend participation** in the Heidelberg Health Economics Summer School to your colleagues / peers?



[Response options from 1, "poor", to 5, "excellent"]



Outlook: Heidelberg Health Economics Summer School 2025

The *Summer School 2025* program is anticipated to comprise again two modules; however, in response to feedback and considering prior experience, each of the modules is planned to last for about four days [and might be booked separately or in combination], in order to better distinguish with basics (the conventional paradigm of HTA and cost effectiveness) and the state-of-the-art of the debate how to better address the links (and gaps) between theoretical foundations, current practice, and stakeholder expectations – in order to reflect the objectives and actual conduct of Health Technology Assessments (HTAs), including health economic evaluation.

The **Heidelberg Health Economics Summer School 2025** will again take place at the NOBIS conference center in Bruneck–Brunico / South Tyrol–Alto Adige – one of the most scenic places of the Italian Dolomites in the Southern Alps. Projected **dates: Module A, Sept. 10-13; Core Module, Sept. 15-19, 2025**; more details will follow in due course. **Save the date:** Given that total number of participants will be limited to a maximum of 30 attendants again – please feel free to contact us for a non-binding early-bird reservation *already now!*

Contacts:

Prof. Michael Schlander: michael.schlander@innoval-hc.com

Dr. Ramon Schäfer: ramon.schaefer@innoval-hc.com

www.innoval-hc.com

Address: An der Ringkirche 4, D-65197 Wiesbaden / Germany